



GAT MONTHLY MEMBERSHIP PROGRESS REPORT

Results as of: 3/31/2021

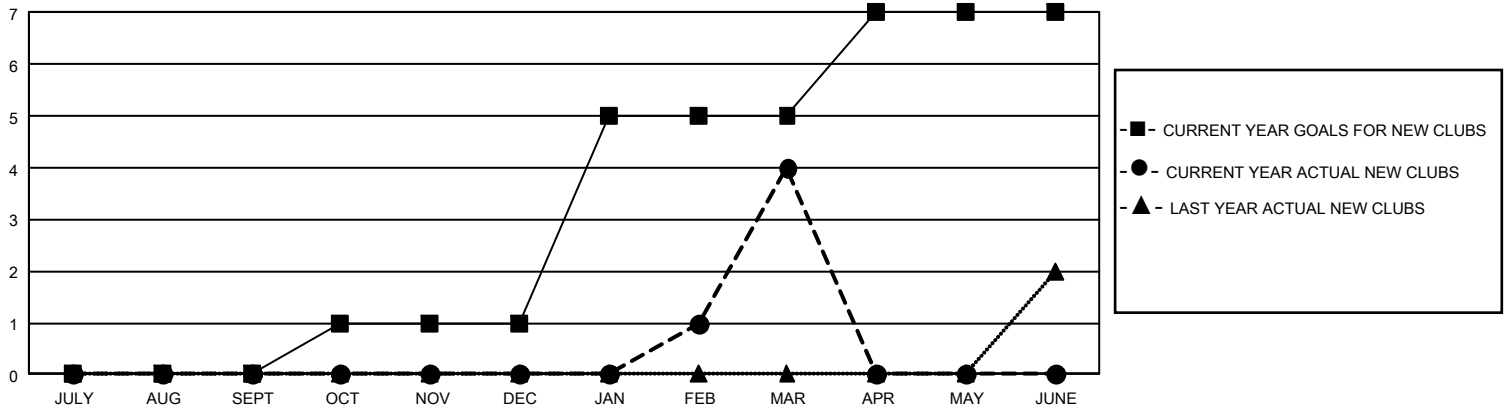
GMT Constitutional Area 7, Group B

REPORT DOES NOT INCLUDE CLUBS IN UNDISTRICTED AREAS.

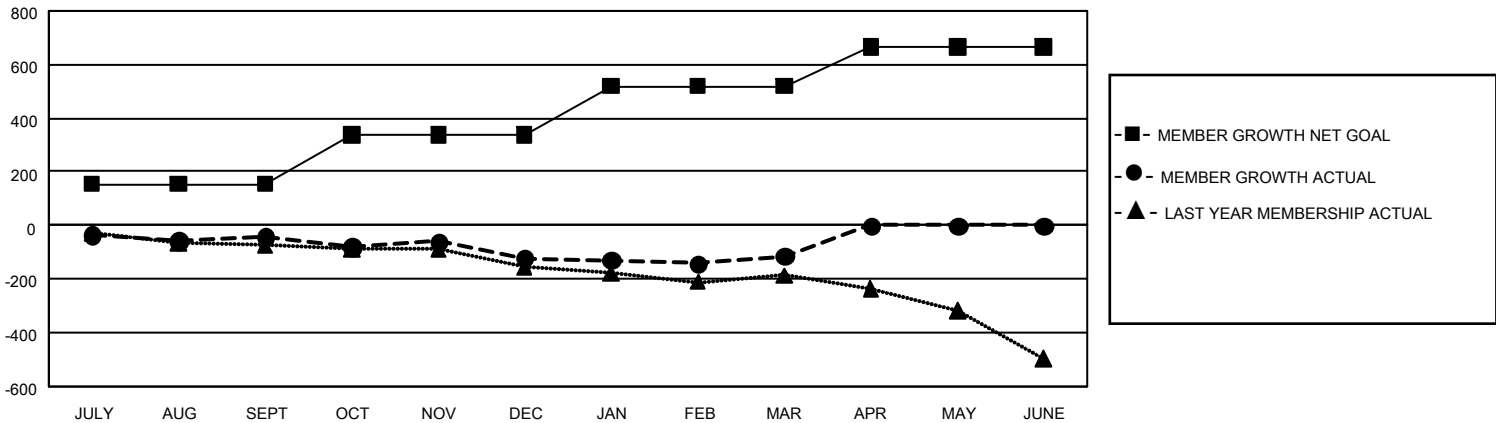
| Clubs | | | |
|-----------------------|---------------|-----------|---------------|
| RESULTS FOR 2020-2021 | | | |
| QUARTER | NEW CLUB GOAL | NEW CLUBS | DROPPED CLUBS |
| JULY/AUG/SEPT | 0 | 0 | 4 |
| OCT/NOV/DEC | 3 | 0 | 5 |
| JAN/FEB/MAR | 12 | 4 | 5 |
| APR/MAY/JUNE | 6 | 0 | 0 |

| Members | | | |
|-----------------------|------------------------|----------------------|--|
| RESULTS FOR 2020-2021 | | | |
| QUARTER | MEMBER GROWTH NET GOAL | MEMBER GROWTH ACTUAL | DROPPED MEMBERS ACTUAL (including transfers) |
| JULY/AUG/SEPT | 154 | 194 | 205 |
| OCT/NOV/DEC | 185 | 211 | 267 |
| JAN/FEB/MAR | 181 | 214 | 174 |
| APR/MAY/JUNE | 146 | 0 | 0 |

GOALS AND ACTUAL NEW CLUBS CUMULATIVE



GOALS AND ACTUAL MEMBERS CUMULATIVE



| | | |
|--------------------------|---|--|
| DROPPED CLUBS: 14 | 198 CLUBS OF 341 ADDED 1 OR MORE NEW MEMBERS | GENDER DISTRIBUTION MALE 5,925 (68.09%) FEMALE 2,777 (31.91%) |
| | DROPPED MEMBERS DECEASED 90 CLUB CANCELLED 11 OTHER 545 TOTAL 646 | CLICK HERE FOR CUMULATIVE MEMBERSHIP DATA |